

Special Purpose HelioProtection[®] photovoltaic fuse-links HP10NH1 1000VDC

Mersen HP10NH1 photovoltaic (PV) fuse series was engineered and designed specifically for the protection of photovoltaic systems. HelioProtection[®] HP10NH1 fuse-links are main fuses designed to protect cables against potential short-circuits in photovoltaic groups of strings. This HelioProtection[®] main fuse range extends our photovoltaic fuse-links offering with a size having a worldwide acceptance. They are of the gPV type and comply with both IEC 60269-6 and UL 2579 PV standards.



Applications

- All PV applications
- Re-combiner applications (sub combiner, array combiner, master combiner)
- Inverter DC input protection

Benefits

- Global acceptance
- Low fault current interrupting capability
- Temperature cycle withstand capability
- Durable construction for enhanced system longevity
- High efficiency with low power losses

Size	Rated Voltage (V)	Nominal Current (A)	Class	Catalog Number	Reference Number	Packaging
NH1	1000VDC	50	gPV	HP10NH1GPV50	Z1028283C	3
		63		HP10NH1GPV63	A1028284C	3
		80		HP10NH1GPV80	B1028285C	3
		100		HP10NH1GPV100	C1028286C	3
		125		HP10NH1GPV125	D1028287C	3
		160		HP10NH1GPV160	E1028288C	3

Ratings

1000VDC
IR = 50kA (L/R = 1ms)

Approvals

IEC 60269-6
UL 2579 (pending)
RoHS compliance

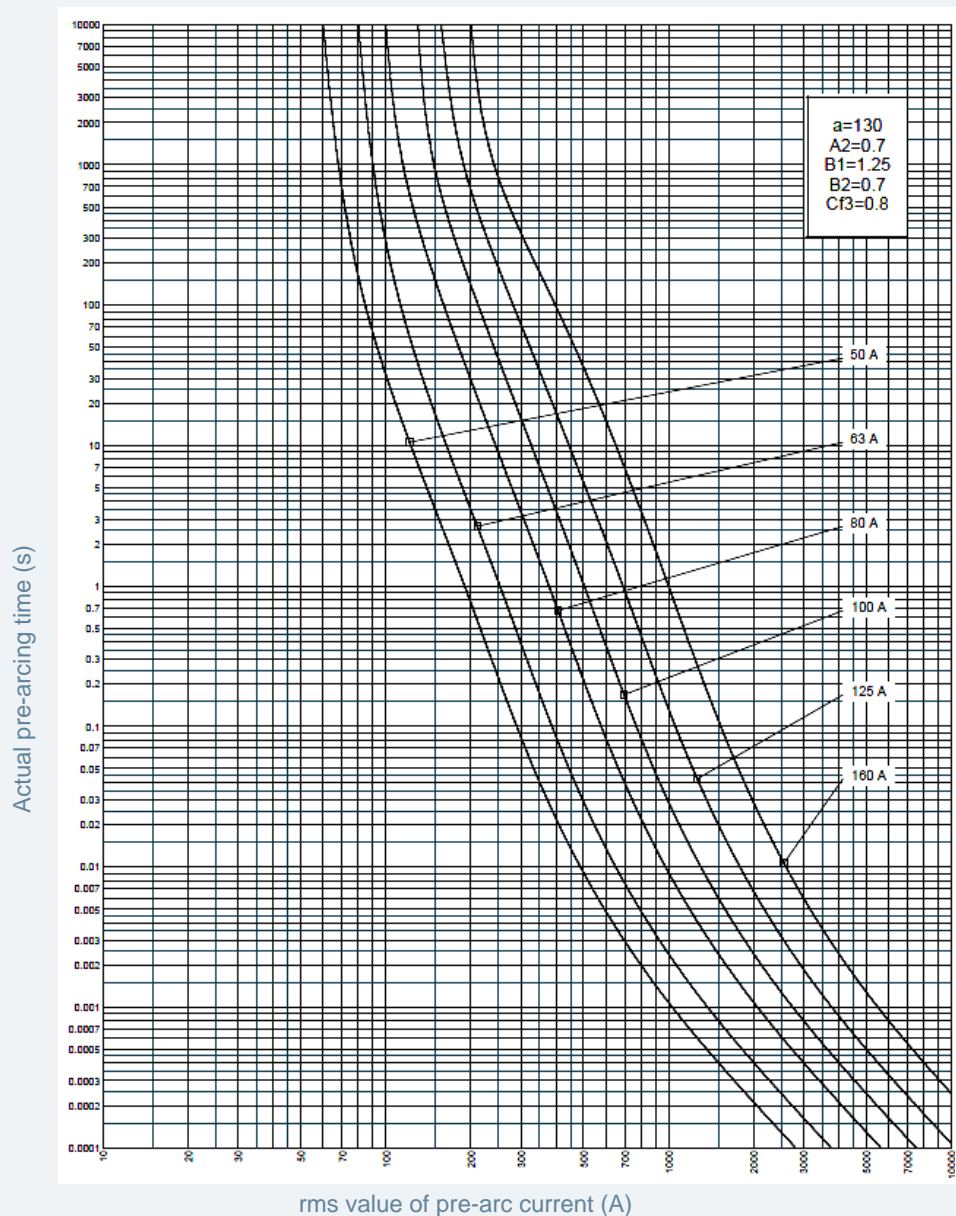


Special Purpose HelioProtection[®] photovoltaic fuse-links HP10NH1 1000VDC



Size	Rated Voltage (V)	Nominal Current (A)	Watt losses @ 100% In (W)	Watt losses @ 70% In (W)
NH1	1000VDC	50	11	4.6
		63	13	5.4
		80	15	6.1
		100	17	7.2
		125	18	7.4
		160	23	9.6

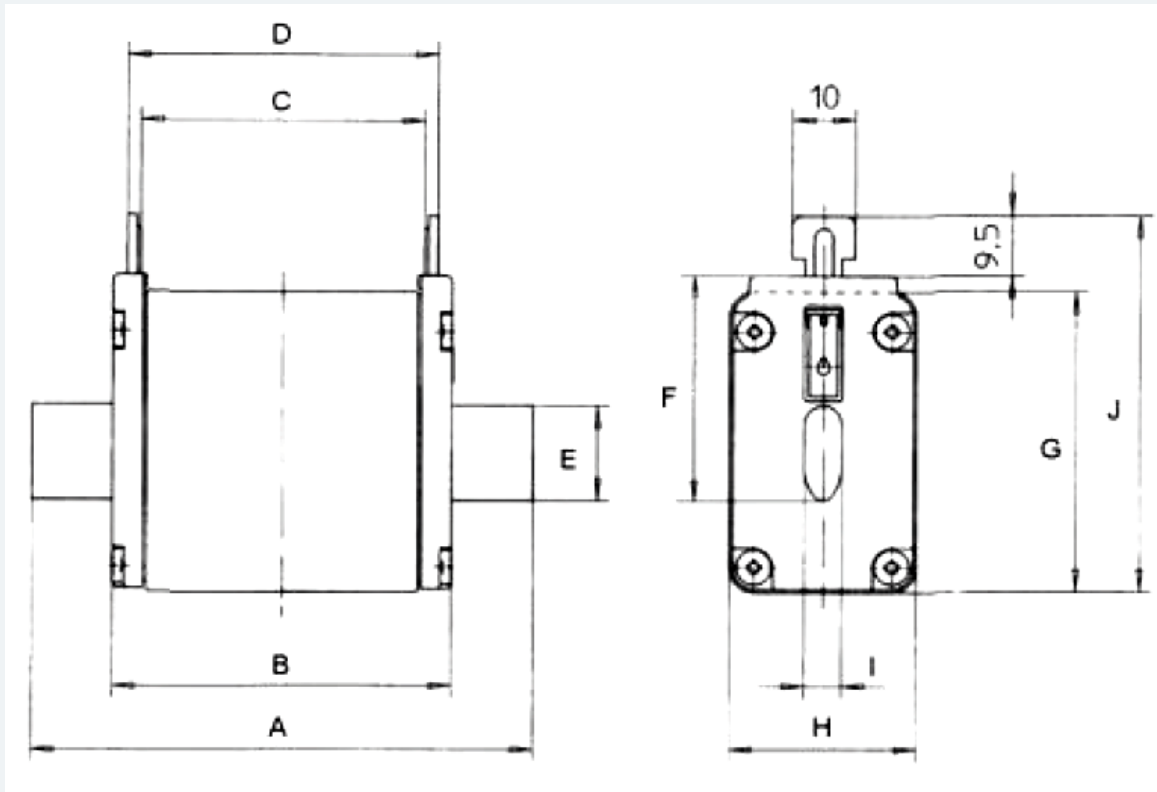
Time-current characteristics



Special Purpose HelioProtection[®] photovoltaic fuse-links HP10NH1 1000VDC



Dimensions (mm)



A	B	C	D	E	F	G	H	I	J
135	70.8	63	68	20	40	52.5	39.5	6	64.5

Special Purpose HelioProtection[®] photovoltaic fuse-links HP10NH1 1000VDC



Related Products



Size	Rated Voltage (V)	Nominal Current (A)	Power acceptance (W)	Mounting Type	Type	Nb of Poles	Catalog Number	Reference Number	Packaging
NH1	1000VDC	250	32	Din rail or Screw mounting	Open base	1	HPBB11PPR	A1030607	3
		250	32		With protection against electrical shock	1	HRBB11PPRFS	K1032916	3

Dimensions (mm)

